

# The Addaline

Sweet Adelines New Zealand Region 35

June 2018

ISSN 1176-872X



*Christchurch City Chorus & Fire and Ice - 2018 Region 35 Champions!*



REAL WOMEN - REAL HARMONY - REAL FUN





**PATRICIA VEEN**  
Administration -  
Regional Executive  
Committee  
directoradmin  
@sweetadelines.co.nz  
021 598 894  
04 904 8426



**LEIGH WHITELAW**  
Membership -  
Regional Executive  
Committee  
directormember  
@sweetadelines.co.nz  
027 326 1864



**KERRY STEWART**  
Education -  
Regional Executive  
Committee  
directoreducation  
@sweetadelines.co.nz  
03 980 3477



**CINDIA CHIU**  
Directors Coordinator  
directors@  
sweetadelines.co.nz  
021 827 656



**JO MAXWELL**  
Marketing Coordinator  
marketing@  
sweetadelines.co.nz  
021 479 620



**KATRINA TE PUNGA**  
Communications  
Coordinator  
sweetadsnz@gmail.com  
021 049 4080  
04 586 0689



**STELLA NICHOLSON**  
Finance Coordinator  
finance@  
sweetadelines.co.nz  
03 453 4095  
021 222 1099

- Messages From Your Regional Executive Team 3
- A Name Like Melody 4
- It All Started With An Innocent Google Search! 6
- Harmony Fellowship 7
- Little Lady Leaves Huge Gap 8
- Julie Tairua 8
- Barbershop And Brass 9
- A Cappellington 2018 Feature 10 -- 13
- The Ooter Experience 14
- Kiwi Express Tour 2019 14
- But Wait! 15
- Ain't It Sweet! 16
- Region 35 Awards 17 -- 18
- Young Women In Harmony 19
- NZ Chapter Contacts 20



### Congratulations Fire and Ice!

*Trish Veen presenting a cheque, on behalf of the Region, to Fire and Ice Quartet (represented by Henri) at one of our Chorus nights. Region 35 sends Fire & Ice every good wish for St Louis – we're thrilled that there will be three NZ Choruses to cheer for you girls!!*

### REGIONAL ASSISTANTS

**FY TAIT** (Archivist/Historian), **JULIE SCOGGINS** (Rules & Bylaws), **NICOLA GILES** (Regional Secretary) **JUDY TULLOCH** (Chapter Liaison), **LESLEY STANDRING** (Membership Liaison), **JENNI MASTERS** (Quartet Education Specialist), **HENRIETTA HUNKIN-TAGALOA** (Regional Education Specialist), **JESSIE LEOV** (YWIH), **Manjula Shivanandan** (Arranger Education Specialist)

**SHARON CONNOR**  
Website Coordinator  
webadmin@sweetadelines.co.nz

**DAVID BROOKS**  
Region 35 Statistician  
stats@sweetadelines.co.nz

**RUTH CARSON**  
Quartet Coordinator  
quartets@sweetadelines.co.nz

**ANGELA BLANK**  
DCP Coordinator  
dcp@sweetadelines.co.nz

**(TBC)**  
Library Admin Coordinator  
library@sweetadelines.co.nz

**JESSIE LEOV**  
YWIH Coordinator  
ywih@sweetadelines.co.nz

**KATE VEEDER**  
YSF Coordinator  
youngsingers@sweetadelines.co.nz

**FY TAIT**  
Historian  
historian@sweetadelines.co.nz

**LEIGH WHITELAW**  
CAL Coordinator  
cal@sweetadelines.co.nz

**MANJULA SHIVANANDAN**  
Arrangers' Coordinator  
arrangers@sweetadelines.co.nz

**BRIANNA PERRY**  
Addaline Design & Layout  
addaline@sweetadelines.co.nz

**SANDY GUNN**  
Addaline Coordinator  
addaline@sweetadelines.co.nz



## A message from your Regional Executive Director Team

Following another successful New Zealand Convention in May, we give thanks to the many women, friends and families who worked so hard both behind and in front of the stage to make this happen. While there is a convention handbook containing rules and procedures to prepare for these events, they are titanic in their length and detail! But the Wellington team has made it look easy, putting on another great event and providing the region with an outstanding convention experience. Thanks also to the weather-gods for providing sunny, rather balmy days.

Our congratulations to Christchurch City Chorus and Fire & Ice Quartet for wowing us all with their performances this year, and all the other choruses and quartets who participated – without you all, there would be no contest. We extend our best wishes to Bella a Cappella, Faultline Chorus, Wellington City Chorus and Fire & Ice who all head to St Louis in October to represent Region 35 – we trust that you will travel safely and perform outstandingly!

**Trish Veen (Administration)**

**Kerry Stewart (Education)**

**Leigh Whitelaw (Membership)**



## Notes from Regional Membership Director - Leigh Whitelaw

We received the following information from Paula Davis, International President, in April:

The International Board of Directors has notified Regions that they have agreed to the following recommendations made by the Regional Leadership Committee and International Leadership Specialists and these recommendations will go into effect on May 1, 2018.

**RECOMMENDATION #1:** That effective May 1, 2018, a chapter may re-charter with as few as 12 members, plus a director. Public performance requires all four singing parts.

**RECOMMENDATION #2:** That effective May 1, 2018, chapters with fewer than 12 members are required to enter Revitalization Status, with annual re-charter fees and competition rules waived. Public performance requires all four singing parts.

**RECOMMENDATION #3:** That effective May 1, 2018, a chapter

currently in Revitalization status, and having more than 12 members, plus a director, can choose to complete Revitalization status for up to two years, dependent on the original start date of Revitalization status, or choose to regain full chartered chapter status, which includes annual re-charter fees and competing once every three years.

The RLC/ILS is strongly recommending that any chorus whose numbers dip below 15, even if they do not go into Revitalization, be given extra help and support to retain those numbers and build their membership back up. This can be in the form of visits, coaching, mentorship, Skype coaching, access to educational materials, financial help to attend workshops, etc.

This change will not affect the initial chartering policy, which is that a chorus must have 15 plus a Director in order to charter as a new chorus. We hope that this new policy will be beneficial for choruses who are in the situation of having between 12 and

15 singing members and Regional Leaders who work with them.

A reminder to look out for communications within the next few weeks from Sweet Adelines International regarding their website move to Groupanizer on June 4. ALL MEMBERS will be sent instructions from International to create a new profile for online access. It is imperative that members update those profiles when requested to ensure they remain on the email lists from International.

To Team Coordinators and Membership Coordinators, a reminder that following your AGM please send updated Team lists to the appropriate regional personnel. If you are not sure who that is please email Lesley Standing [lesleys@slingshot.co.nz](mailto:lesleys@slingshot.co.nz)

If you have any enquiries regarding membership issues I'm here to help. Please email me on: [membership@sweetadelines.co.nz](mailto:membership@sweetadelines.co.nz)







# A name like Melody

With a name like Melody, she was set up to have loved, breathed and lived music for most of her life, and this lady sure has done that. Even now as a riser member, she continues to inspire and motivate young and aspiring Sweet Adelines and current members of GAC.

Melody Lowe is the recently retired Master Director of Greater Auckland Chorus and has now handed over the reigns to daughter, Master Director Jocosa Bruce, after a stint of co-directing.

We asked Jocosa Bruce, current Master Director of Greater Auckland Chorus, how her mum balanced life, working full time, raising a daughter, and taking part in quartet activities. "Living was what mum wanted to do... so I was taken everywhere with her."

Melody has been a Sweet Adeline since 1990, coming from a background in musical theatre and drama teaching, having performed in and directed many musicals. She got the opportunity to direct SouthCity Harmony in 2000, while still singing bass on the Greater Auckland risers,

and when the position opened up to lead GAC to International competition in Phoenix in 2003, Melody seized the opportunity with both hands and the chorus has never looked back, going on in Detroit 2004 to have three of the international judges place GAC in the Top Ten.

"I will always appreciate the way Melody pumped me full of information at every opportunity – I was ready to soak it up!"

From 2003 to 2017, Greater Auckland Chorus have been very fortunate to have a Master Director with not only excellent musical and dramatic talents, but also the skills to motivate and enthuse. Our Tuesday night rehearsals often resemble the atmosphere of an exciting party with friends, and we go home exhilarated. Much of that is attributable to Melody's own personality, her passion for what we do and her detailed planning that ensures a



varied and entertaining evening. Now that Melody is no longer at the helm, she is still holding her own in the bass section on the risers.

"One of the moments I remember most is when Melody came and stayed with us prior to travelling to Chapman University. We had a wonderful few days and laughed ourselves sick. I met Melody at IES, specifically at a party A Cappella Gold had in our rooms. Melody taught us all to do a Haka. We had a wonderful time!", reminisces Kim Vaughn, International Sound Judge. Kathy Jamieson, a quartet mate from Melody's 'Hot Ash' days, had



the following message: "I learned so much in a short space of time singing under Melody's direction and singing in Hot Ash with Melody and Jocosa. I will always appreciate the way Melody pumped me full of information at every opportunity – I was ready to soak it up! What always impressed me about Melody was her energy! She not only walked fast, and talked fast, but she exuded energy in front of the Chorus, in rehearsal and on stage and it couldn't help but rub off onto others around her. Her thirst for learning was great role modelling for the rest of us – every new technique or pearl of wisdom from visiting coaches was applied with gusto and her appetite for trying out new ideas was huge. Most of all I loved the fact that she was always striving for perfection, not

only for herself, but she wanted to see everyone reach their full potential. Yes, she pushed us and sometimes pushed hard, but it was because she wanted us all to achieve our dreams, and she wanted to see us all fly as high as we could. I'm just grateful I found GAC when I did, grateful for all that I learned from Melody and the training that she gave me. I wish her wholeheartedly all the very best in her retirement, and will never forget the bond that you have with someone who has been a quartet mate."

Greater Auckland Chorus would like to acknowledge Melody's many years of pushing us, making sure we were all moving in sync, devising fabulous choreography and ensuring many

## ACHIEVEMENTS IN CHORUS:

### South City Harmony

Most Improved 2002 (116 points)

### Greater Auckland Chorus

2003 = Intl Phoenix (24th)

2004 = 618

2005 = Intl Detroit (17th)

2006 = 639

2007 = Intl Calgary (wildcard 22nd)

2009 = 643

2010 = Intl Seattle (30th)

2012 = 626

2013 = Intl Hawaii (wildcard 29th)

2014 = 621

2015 = Intl Las Vegas (27th)

2016 = 632

2017 = 613

She also competed with Skyline twice and has International Medals to show for it.

laughs and giggles, while ensuring the best possible results at regionals and internationals. We're so glad you're still on the risers with us!

# Music Director Opportunity! - Australia

**Do you know someone with the talent, personality and skills to lead our vibrant, fun-loving chorus? Could it be you!?**

Vocal Vibes Chorus, in Victoria, Australia, is on an exciting journey with the potential to achieve great things in the years to come.

With the retirement of our Music Director, we have an exciting opportunity for the right person to become an important leader on our team.

The Director role is available from June '18, and we invite expressions of interest by requesting an Information package at [info@vocalvibes.org.au](mailto:info@vocalvibes.org.au)

All enquiries remain confidential.







# It all started with an innocent Google search!

It all started with an innocent Google search. Christchurch + women's + singing.

Five weeks later I found myself on Chorus Retreat with over one hundred beautiful song-birds, part of the Christchurch City Chorus. In the week before Retreat I kept asking myself what I'd gotten myself into, spending a weekend with a bunch of women I didn't know! What if they didn't like me? What if I didn't like them?

Of course, I shouldn't have worried. I took along a book, just in case I needed to run off and hide away. Well, I can tell you the book didn't make it out of my bag, and not just because I spent my whole weekend singing. Everywhere I went there was a wall of friendly, welcoming faces. What an encouraging bunch. Talented, dedicated, with just a little touch of crazy. I did everything that

was asked of me, because that's what everybody else did. My insecurities got left at the door along with my book.

"Everywhere I went there was a wall of friendly, welcoming faces."

Not that I would have had time to read it anyway. Kim Vaughn was a cracking taskmaster who knew how to get the best out of the Chorus. We would sing each line again and again until our voices were ringing. I think we gave the resident bellbirds a run for their money, filling the air with beautiful song. Wow! I learned a lot. Fortunately, Kim and Virginia gave us a little time off to unwind and relax on Saturday night.

Did I say relax? I don't think that's a word in the Christchurch City Chorus

vocabulary! The chorus members play as hard as they work, throwing themselves into the night with reckless abandon, and a flurry of feathers and sparkles. The dining room was not big enough to contain the amount of talent in the room, and my plan of hiding in the back and watching the festivities from afar was thwarted before it began. No time for shrinking violets, being a wall flower would have gotten me more attention than just getting up and giving it a go. I loved every minute of it!

So, thank you to all of the wonderful people who made my start in the chorus so welcoming. Retreat weekend reaffirmed my decision about joining a group and singing again, and I'm so glad my Google search led me to the Christchurch City Chorus.

TONI STEPHENS



*First certified BHNZ coaches: Richard Harker - City of Sails Chorus, Henrietta Hunkin-Tagaloo - Wellington City Chorus and Kisena Asi - Vocal FX Chorus*



# Harmony Fellowship

The week before our own Region 35 contest, I was part of the Barbershop Harmony NZ project team for their educational event in Hamilton - Harmony Education Aotearoa, which I was Programme Manager for.

It was a highly enjoyable event with guest faculty member Steve Armstrong, former Champion Director of Toronto Northern Lights. It was also great to have other faculty members from around the country, as well as some other Sweet Adelines and past Sweet Adelines on the quartet coaching team.

As a BHNZ Coaching Candidate since 2016, I have been involved with the coaching of quartets at the educational events, and have taught a number of classes. This year I taught a class on 'Staying Vocally Fit with Age,' as well as a class on 'Performance Video Analysis' and in the past have also taught classes on 'Beat-boxing', (one of my favourite classes!)

This year I was privileged to become one of the first Certified Coaches as part of their Education Team strategy to further the craft of barbershop singing among its members. It was

also a special time to be the first female certified coach in the men's organisation. There were five of us altogether who certified, which means that groups looking to hire us for coaching can have confidence that we have the training and skills to be able to deliver a strong coaching experience.

As a coach across both the men's and Sweet Adelines NZ organisations, I look forward to helping more groups in the barbershop craft.

**HENRI TAGALOO**



*Faculty from Harmony Education Aotearoa featuring Steve Armstrong from Toronto Canada*

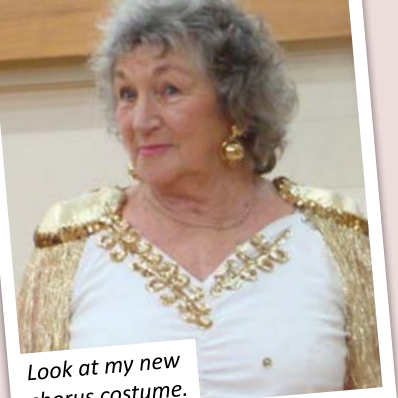


*Henrietta Hunkin-Tagaloo: First female certified coach in BHNZ*





Lea, second from the right, at a Christmas singout in Trafalgar Street.



Look at my new chorus costume.

# Little lady leaves huge gap

Lea Exton joined Nelson City Chorus (now Nelson Bays Harmony Chorus) in December 1995, at the ripe young age of 61. Sounds simple, but this statement doesn't come close to describing the impact she made on the chorus over the next 23 years.

Lea (pronounced Lee, unlike a well-known coach with the same spelling) was a singer 'for ever'. As children, she and her sister Fay performed regularly on radio, singing mainly country-and-western style. As a consequence of her love of music, Lea knew every popular song from the first half of the 20th century, which made learning

traditional barbershop in Lead very easy for her, even when 'they changed it'. She was usually first off the paper, even in more modern songs she didn't know or even much like.

Lea had an extensive number of female relations all over New Zealand, so Family Chorus at Convention was just made for her. Unfortunately she was never able to persuade any of them to join a chorus, though she tried hard.

She didn't drive, so anyone who took her to rehearsals or singouts would regularly find a jar of homemade marmalade or chutney in the car the

next day. Lea was notorious for her homemade wine – her brown paper bag made a regular appearance at chorus functions – and it was potent, no matter what it was made of. She was on the risers right to the end. During a recent workshop, she quietly left her place to sit down, then we had to call an ambulance. More than 90% of the chorus attended her funeral, and afterwards we created a book of memories in words and photos, to give to her family. Small in stature she may have been, but she has left an enormous hole in our chorus.

## Julie Tairua 6th March 1945 –10th May 2018

On Tuesday 15th May in a service at her beloved Baptist church, Julie Tairua was farewelled by her family, friends, and two full rows of Sweet Adeline ladies who all loved and respected her.

Julie joined Twin City Sounds in Hastings a year after its inception in 1991 and soon featured on the Management Team, being instrumental in setting up many aspects of the chorus. Spurred on by a Presidents and Directors seminar in 1991, Julie worked hard in establishing a solid, forward thinking foundation for the chorus. At that time the chorus was governed by a Board of Directors and she became president. When in November 1993 the chorus was officially chartered, Julie and her dear friend Dorothy Bisley (the Musical Director) were extremely excited and satisfied.

Copious albums of photographs and records of this era were accurately

kept by both Dorothy and Julie and it is obvious in looking through these records that they ran a very happy ship.

Many social occasions, coaching and an incredible number of sing outs were presented. Julie loved the fun and friendships off the risers too and often caught people off guard with her wicked sense of humour.

Julie was a bari – centre back row. She also sang in a quartet alongside Jane Fisher, Royala Goldfinch and Louise Hamilton. They were 'Sound Proposal.' During the 1990's, at the height of her Sweet Adeline involvement, she joined the Regional Management Team taking on the role of Membership Chair. She applied her baritone tendencies while serving the choruses of New Zealand with her typical sense of order and purpose. Sweet Adelines took her on many journeys. The most memorable of these

was a visit to the Sweet Adelines International Convention in New Orleans in 1995

accompanied by a group of her chorus buddies. Such a venture was a big deal in those days.

Unfortunately, traumatic health issues eventually prevented her from taking to the risers, but she continued to support and attend chorus events as well as enjoying a coffee with old chorus friends.

Julie's only daughter Kere, fondly remembers her mother's chorus singing her up the aisle at her wedding, and the lilt of "San Fran' Bay Blues" being sung to her infant son in lullaby tones by her mum. Kere says "Sweet Adelines was my mum's 'gig.' It affected myself, my three kids and extended family in such a beautiful way. I shall always cherish the memories".







# Barbershop and Brass!

What a delightful mix of performers!! Just a couple of days before ANZAC Day, Christchurch City Chorus held their very successful Family and Friends Show in the Charles Luney Auditorium at St Margaret's College. The timing of this show slotted in beautifully for the chorus. It was just prior to Region 35 Convention and allowed all our members the opportunity to feel as if they were at convention. Our newer members got a real taste of putting on show make up and costumes as did our competing quartets.

The first half emceed by Sandy Gunn and Lea Beverley saw the

chorus performing songs along with corresponding visuals from our wider repertoire.

The second half commenced with our very special guests, The Leopard Coachlines Canterbury Brass Band under the direction of Dwayne Bloomfield.

They opened their bracket of musical numbers with a very moving original piece written by Dwayne Bloomfield – a tribute to ANZAC Day that depicted the battle at Gallipoli and its aftermath. Three soloists from the band also performed. The audience loved the band - so did we.

The last bracket of songs for the night saw Christchurch City Chorus return now dressed and made up as if we were entering The Michael Fowler stage, introduced by Lea Beverley convention-style, first the quartets then the chorus.

And we thrilled the audience with our two competition numbers and felt very proud of our performance. As we packed up after the Show we were all buzzing and feeling great about our next big challenge – SANZ Convention in Wellington.

MABEL KNIGHT





# A Cappellington 2018 is a wrap!

Another year in the Sweet Adelines' calendar has flown by. Convention is done and dusted until we meet again in Dunedin.

Those shoes should all be tidied away in wardrobes or cupboards, the chorus shoes, the dancing shoes and the necessary flat shoes. I bet there are some new members putting in their diaries a reminder to carry a change of shoes in their bags for once they come off stage – oh the relief.

Even though I have competed many times it never fails to amaze me how fast those few minutes on stage seem to go! To arrange those few minutes on stage for all our performers takes hours and hours of work for months prior to convention. If you've never been a part of the convention team it is a great way to learn more about the organisation and to upskill in event planning. This was my first year as Chair of the Regional Convention and it was a very steep learning curve. The success of the convention is due to the efforts of a number of members both local to Wellington and beyond.

I would like to take this opportunity to thank them by name: Lynley Ball (Riser Setup), Gill Barnett (Assigned Seating Plan), Shelley Bascand (Afterglow), Jacqui Binnie (Host Chorus Liaison/Quartet Driver), Christine Binns (Official Opening), Annie Brown (Backstage), Cindia Chiu (Directors' Liaison), Sharon Connor (Convention Information/

Backstage), Gillian Croad (Official Opening), Shelley Dalton (Quartet Driver), Bev Driver (Harmony Arcade), Jan Edgar (Front of House Contact), Christine Godfrey (Registrar), Margaret Gorton (Registration Pouches), Toni Griffin (Quartet Reception), Ann Humffreys (Page), Debs Kessell-Haak (Afterglow), Jo Maxwell (Marketing), Liz Moncrieff (Traffic Pattern), Maria Mullane (Riser Transport), Shirley Munro-Holmes (Awards), Cindy Naresh (Assistant to the CRC/Assigned Seating Plan), Stella Nicholson (Finance Coordinator), Melina Perry (Emcee), Shelley Phillips (Competitor Transport), Sue Rigby (Registration Desk), Robin Ransom (Official Opening), Kate Sinclair (Emcee), Janet Sleith (Harmony Arcade), Laura Sommer (Quartet Driver), Bernadette Takacs (Backstage), Claire Takacs (Competition Coordinator, CC), Val Taylor (Page), Katrina Te Punga (Communications/Assistant to the CRC) and Maggie Trodahl (Official Panel Liaison, OPL).

There were also members working in the traffic pattern as escorts, working on the registration desk and generally picking up tasks whenever they were asked. To each and every person who was involved, thank you! Conventions would not happen successfully without volunteers like you.

From the pack in on Thursday morning to the Afterglow on the Saturday evening, the Michael Fowler Centre was buzzing with

Sweet Adeline activity. The Harmony Arcade this year had external vendors and some were so taken with our convention they have asked if they can come back. The fundraising for the Prue Blythe Memorial Fund, which is run by the energetic Kate Veeder, raised a fantastic total. These funds support the Young Women in Harmony programme in New Zealand which continues to introduce our craft to students all over the country and supports the regional and national under 25 age contests.

The Afterglow once again proved a popular event and this year people were dancing until the lights were being turned off! Our One Man Band, Mark Hanify, has stated it was his best ever one man gig – to have an audience that is as interactive as ours made his night and we can sing harmonies!

Thank you to you, the members, who came along and made the difference – it is for all members that Region 35 provides an action packed convention each year, providing opportunities for performance and education, along with the one thing that keeps us all connected, friendships.

Here's to 2019 when we get to catch up with friends again!

LEIGH WHITELAW  
CHAIR OF THE REGIONAL  
CONVENTION 2018





# Chorus Results

Contestant		Sound			Music			Expression			Showmanship			Grand total
		1	2	Tot	1	2	Tot	1	2	Tot	1	2	Tot	
1	Christchurch City Chorus	86	84	170	87	84	171	83	85	168	84	88	172	681
2	Greater Auckland Chorus	76	75	151	69	72	141	72	75	147	75	76	151	590
3	Manawatu Overtones Chorus	64	63	127	65	63	128	64	66	130	65	64	129	514
4	Sounds of Hawkes Bay Chorus	62	59	121	58	60	118	62	63	125	63	64	127	491
OPEN	Capital Harmony Chorus	C+	C+		C+	B-		C+	B-		C+	C+		
OPEN	Taranaki Harmony Chorus	C+	C+		C+	B-		C+	C+		C+	C+		

Division A (Small Chorus)

1st Place - Manawatu Overtones | 2nd Place - Sounds of Hawkes Bay Chorus

Division AA (Mid Size Chorus) - Greater Auckland Chorus





## Quartet Results

Contestant		Sound			Music			Expression			Showmanship			Grand total
		1	2	Tot	1	2	Tot	1	2	Tot	1	2	Tot	
1	Fire and Ice	76	73	149	74	73	147	75	74	149	73	75	148	593
2	L'Attitude	72	70	142	72	70	142	69	72	141	70	72	142	567
3	Hopscotch	68	67	135	69	68	137	68	70	138	70	71	141	551
4	ROXY	65	66	131	66	66	132	70	67	137	69	67	136	536
5	ZEAL	67	65	132	69	67	136	67	66	133	67	66	133	534
6	Cosmic	65	64	129	65	61	126	67	68	135	66	66	132	522
7	RED	64	63	127	65	63	128	63	64	127	65	64	129	511
8	Hot Property	63	62	125	65	63	128	65	64	129	62	62	124	506
9	F.A.B.	64	63	127	64	62	126	61	60	121	62	63	125	499
10	Heist	59	62	121	58	60	118	57	54	111	55	56	111	461
11	Acoustic Blue	57	55	112	59	55	114	53	48	101	57	55	112	439
12	Sincerity	52	50	102	53	50	103	59	56	115	57	56	113	433
13	Compass	51	49	100	57	55	112	55	53	108	53	52	105	425
14	Rogue	45	47	92	49	47	96	47	50	97	50	54	104	389
15	DIVERSITY	47	46	93	51	49	100	44	46	90	49	48	97	380
16	Leading Edge	45	43	88	45	44	89	49	47	96	49	48	97	370
17	Ce Soir	46	44	90	46	41	87	44	43	87	50	49	99	363

Champion Quartet: Fire and Ice: Jane Martin (Tenor), Henrietta Hunkin-Tagaloa (Bass), Cat Hay (Lead), Jane Esera (Bari)  
 Most Improved Award (Regional): +17 Acoustic Blue | Novice Quartet Award: Heist





A CAPPELLING T 8 2018





# The Ooter Experience

Many years ago Virginia came to coach Melbourne Chorus with a new vision to recruit 'ooters' as additional voices.

CCC had won their regional and they were Canada bound now she was excited as six Melbourne 'ooters' she had found.

So began our intense schedule and many trips o'er the ditch to get up to speed with the chorus on their choreo and pitch.

In the early days we stayed at Sally Clarke's motel to rest having lots of fun and laughter and sang to her many guests.

As the competitions became fierce and the dream to win gold more 'ooters' were found with voices so rich and bold.

From Faultline, Foveaux, Waikato Rivertones and Nelson Bays

Harmony, Wellington and Dunedin and Manawatu, we're all here to stay.

I haven't forgotten Auckland or directors from near and far who gave inspiration and their talents to help us raise the bar.

I am in awe of the creative packages and the fantastic choreo plan which took us to great heights in Vegas with our Swedish clan.

The coaches are exciting with their individual skills and technique from Jan and his sassy moves, to Lynne Smith's facial critique.

We had Ryan Heller and Jim Arns and Darlene to give us a lift their knowledge of how to ring those chords is truly a gift.

The annual Retreat to Living Springs is a real must you see with dress up night and talent that is as crazy as can be.



Now its time to focus as Virginia sets her sights once more as the goal posts keep moving closer as we aim for US shores.

So it's farewell from the 'ooters' and thanks for letting us in your home and making us feel so welcome on the risers and not feeling all alone.

LYN "PATSY" HARTY  
AUSSIE OOTER

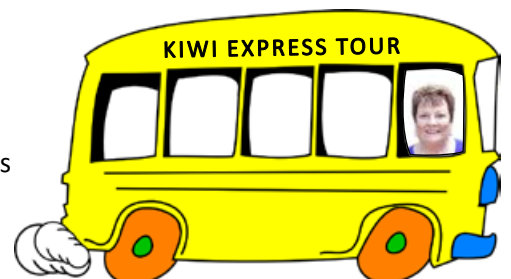
## Kiwi Express Tour 2019!

The KIWI EXPRESS TOUR is a budget two-week tour, scheduled to leave post Sweet Adelines International Convention in New Orleans in 2019.

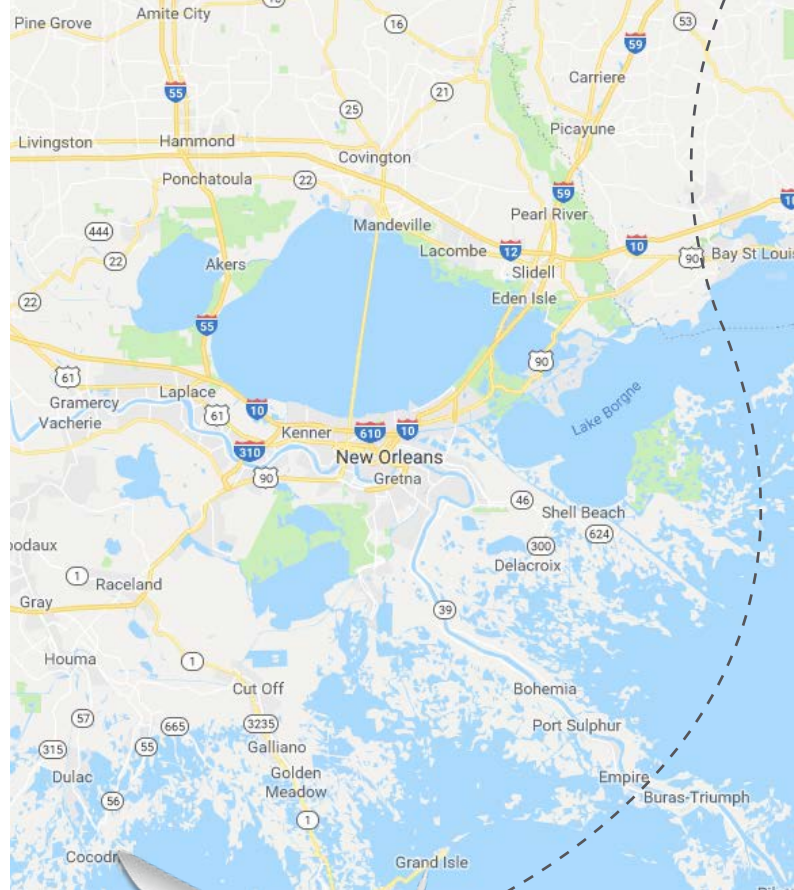
It's a great way to get to know other Sweet Adelines and to visit/sight-see/explore the USA.

There is a NZ \$100 deposit which is a non-refundable deposit, due when you register.

If you want details of the Kiwi Express Tour, do contact Kate Veeder at [lanthekate@gmail.com](mailto:lanthekate@gmail.com)







# But Wait!



You have to read this story to first of all believe it (it is 100% true) and then laugh at what volunteers do in this world and endure along the way.

I fly from Auckland to Houston on Tuesday (an almost 14 hour flight). The flight is 100% sold out.

I am an economy class passenger with a much sought after aisle seat BUT I am joined by a chorus of four infants sitting in four consecutive rows - they cried one after another almost the entire flight.

Land in Houston on time, clear customs and head for my flight to Chicago, which is also on time.

Board the flight in Houston for Chicago - but wait we are sitting on the runway not going anywhere – turns out according to the pilot they did not have the right paperwork and it took over an hour for the airline to get it right so we can depart.

Arrive late in Chicago because of the delay in Houston BUT WAIT - we are

all standing in the aisle waiting to disembark and the door won't open - they had to call electricians to come fix the door (40 minutes of everyone waiting to get off the plane) - and eventually the door was open.

**"You have to read this story to first of all believe it (it is 100% true) and then laugh at what volunteers do in this world and endure along the way."**

Knowing I had missed my flight from Chicago to Appleton, I hurry anyway just in case I can make it. It's a 3/4 mile walk in the huge Chicago Airport to get to the Regional Carriers BUT WAIT the flight has NOT gone, it is delayed - they were trying to locate the second pilot who had not shown up for the flight. Eventually the second pilot arrives and we are able to head away two hours later than scheduled to Appleton.

We arrive Appleton, lots of snow on the ground BUT WAIT the plane is on the side of the runway where United only has one air-bridge at the Appleton Airport and there is another plane parked there. We wait in the cold plane for another 20 minutes before it can taxi up to the air bridge!

My OPL is there to meet and greet me and haul me through the town of Appleton, which has received a gush of snow - all swept and piled high in columns metres high - and this was meant to be spring!!!!

I arrive at the hotel, exhausted. But the size of the room is amazing, the king size bed is welcoming! I am sad watching the tributes to Barbara Bush but remind myself why being a volunteer does have its benefits - I am secure, I have bottled water to drink, snacks provided by the Region and know that waking up next morning may bring more adventure and challenges.

KATE VEEDER





# Ain't it Sweet!

Christchurch City Chorus is delighted to have wowed the judges, winning the Region 35 competition in Wellington for the 11th time.

Described as the All Blacks of Barbershop, the chorus has taken first place in every Region 35 competition they have performed in since 1990. They are proud to be representing Region 35 and New Zealand in style, in New Orleans, USA, in September 2019.

The chorus also celebrates several fantastic wins from individuals and quartets who performed at their very best at the Wellington Convention. Cat Hay's quartet "Fire & Ice", won 1st place in the Quartet Competition, teaming up with Jane Martin from Waikato Rivertones, Henrietta Tagaloa and Jane Esera from Wellington City Chorus.

L'Attitude quartet followed with 2nd place, with Christchurch City Chorus members, Virginia Humphrey-Taylor and Carolyn Duggan teaming up with Toni Griffin from Bella A Cappella and Patrice Driver, CAL. With their classic barbershop sound, they are proud

of their 2nd place medal and know they'll already be busy planning for next year's convention.

**"Described as the All Blacks of Barbershop, the chorus has taken first place in every Region 35 competition they have performed in since 1990."**

Likewise, Christchurch-based quartet, Hopscotch, Raewyn Tidey, Jude Cheyne, Nicky Murray, Emma Hoadley were thrilled to finish in 3rd place, and proud to represent Christchurch on stage. They sang superb renditions of "Next Time I Love" and "It's a Pity to Say Goodnight", a song the fabulous Ella Fitzgerald sang.

In the non-singing awards, Miriam Spragg was presented with the Region 35 Spirit of Sweet Adeline Award. Miriam is well known as being the person who not only makes chorus life better, but also takes the extra step and carries the 'spirit' of Sweet Adelines from

Christchurch to beyond.

We also celebrated significant milestones with long service members, Erica Bennett, Mabel Knight and Ngaire Richardson, who received their 25 year pins. What a fantastic achievement.

Last, but not least, Virginia Humphrey-Taylor introduced the wonderful idea of Mission Possible, a challenge to other choruses across New Zealand to double their members and create new choruses in other areas, which may not have heard of barbershop before. We would love you to take up this worthy cause. Should you choose to accept it, please take action and make this Mission Possible a reality.

We wish all the very best to Wellington City Chorus, Faultline Chorus, Bella A Cappella and Fire and Ice quartet who will represent Region 35 in the Sweet Adelines International competition in St Louis in October this year. MAY THE VOICE BE WITH YOU.

RINI HIDAJAT







## Sweet Adeline 25 year Pin Presentations



### PRUE MAHONEY

'Interested in singing?' the advert said. By answering YES little did I know where my life would be led. Just a little old lead I thought I would be but NO! – guess what opened up for me?

Choreographer and Showmanship Chair – makeup and designing costumes for chorus to wear Lead section leader / Assistant Director – oh no more meetings I didn't factor!

Chorus and quartet medals on my chest - three times on the international stage, that was the best! Conventions, retreats and travel all mine - 25 YEARS amazing years with my singing family FAULTLINE!



### DIANE CLARK

Grown-up children all left home, marriage break-up, I was alone. Moved to Auckland for pastures new, saw GAC - my mind, it blew!

Latent performer burst from within, song and dance and loads of bling. Fed my urge to return to the stage, at 53, I embraced my age.

With sequins, false lashes, coaching, direction. Where else could one find four-part chords of perfection. And then to travel with friends overseas, to represent country - such memories are these.

An entrepreneur, I raise chorus money, make dress-ups for parties, creative and funny! The years have just flown, where have they all gone? The body now aging - but I still sing the song!



### ERICA BENNETT

I have been a proud member of Christchurch City Chorus since 1993, and have sincerely valued the wonderful friendships formed and the opportunity for self-growth, and musical education in a supportive, encouraging and fun environment.

During my 25 years membership, I have been the Tenor Section Leader, Section Coordinator, competed in three quartets and have been to six SA International Conventions.

The ultimate highlight was when Christchurch City Chorus was placed 5th in Las Vegas in 2016. Our Goal was achieved with hard work and dedication. The Motto I like to remember is: "If it's to be, it's up to me."



### JOCOSA BRUCE

I started SAI when I was 12 and was told by my mummy to come and help out with the tenor part...I loved it! What a cool sound. I got to dance and sing, sing and dance. It was a blast! Then, I got to do some arm waving from 2003 for a couple of years and got to go to the Directors classes at IES. I was one of elite folks now...the ones I looked up to as my mentors were now my buddies, helping me along my new journey. From Section Specialist to Choreographer, to Sound coach to Arm Waver, Education Coordinator to Task Force member and Editorial Review Board for the Pitch Pipe to Judge Candidate...I've loved all of the challenges from working with people, learning new skills and getting my feet firmly planted on the ground...and there's still so much more to learn! I now love my gorgeous GAC girls and the culture within our chorus as their leader and friend. This journey feels like it has just begun. Here's to the next chunk of years!



## Sweet Adeline 25 year Pin Presentations



### WENDY PATTERSON

I joined the Dunedin Harmony Chorus in January 1993. The Dunedin Chorus sang at the Andersons Bay Bowling Club Xmas function in 1992 and my husband Roger and I were at the dinner. I loved the harmony and asked about joining. I was invited to a "New Members" night being held in the new year. I attended with quite a large number of other ladies, and after singing, "Daisy, Daisy, give me your answer do", I was voice placed as a baritone. It was a bit daunting as I was used to singing in a church choir and had never sung solo by choice, but everyone was so positive and welcoming, I knew I had come to the right place.

Competitions were held bi-annually then, and the "off" year was a music convention, which was held in the South Island (Dunedin) that year. I loved how groups would start singing and others would join in. My friend Julie Peacock, another newbie had our music folders and had fun joining in with the few songs we had learned.

I have sung in three different quartets over the years, and competed twice. Music roles were organising the music library, and Baritone section leader. Management Committees have been Membership, Music, Publicity and Social.



### NGAIRE RICHARDSON

25 years ago, while walking up heaps of stairs in the centre of Christchurch to an open night for CCC; prepared me for one value of this wonderful chorus (FITNESS REQUIRED!). "Welcome just go with the flow up on the risers," no ready set grow programme then, oh and by the way we have a list to announce your intention to go to New Orleans!

So, there it started and what a privilege to be part of all that it means to be a CHCH City Chorus member. From not wanting to get lost in New Orleans, to 19th in Portland 9th in Calgary and 6th in Hawaii, allowed lots of fun (as well as vocal skills) at Retreats and awesome friendships and amazing life skills attained assisting me with my business. I love being a baritone - what a wonderful group of women. Another 25 years? Depends.

Harmonious thoughts from  
Ngaire Richardson.



### MABEL KNIGHT

Little did I know when I went along with a couple of friends to an a cappella group of women who sing barbershop style, what joy and inspiration this chorus and Sweet Adelines generally, would bring into my life. And now 25 years later, I am still just as passionate and committed to my chorus Christchurch City and our Region 35.

I have loved the personal challenges, the friendliness and personal growth that being a Sweet Adeline entails. The time has just flown by. I am delighted to receive my 25 year pin. I have also thoroughly enjoyed my years of service on our Regional Management Team and my commitment to my chorus is still a top priority with me.

As Confucius once said "Where ever you go, go with all your heart" and I couldn't agree more with this sentiment.





## 2018 National Young Women in Harmony Chorus

Directed by Kathy Jamieson of Nelson Bays Harmony Chorus, the 2018 National Young Women in Harmony Chorus performed for Region 35 during the National Convention in Wellington on Friday 4th May, during the tabulations of the quartet contest. 15 young ladies from across NZ came together to learn and perform Orange Coloured Sky, arranged by Barbara McNeill, with learning tracks kindly donated by Jennifer Cooke. The group was a diverse mix

involving youth Sweet Adelines from Nelson, Christchurch, Hamilton and Auckland, including quartet members of Heist, ZEAL and Fire and Ice, as well as young barbershoppers from the Wellington region from Aotea College's YWIH Chorus ACBC (led by David Brooks) and the Embellished Chorus. As part of this day long YWIH event, the participants got to watch the quartet contest after their morning rehearsal and get a taste of the awesome barbershop singing,

taking place in our region! From all accounts, it was a really fun day and a great performance experience for all involved. The Prue Blythe Memorial Trust collection, which took place directly following the performance, raised over \$1000, which was a fantastic way to end the day. A big thank you to the Prue Blythe Memorial Trust who funded the sheet music costs for the chorus and thank you to Sweet Adelines NZ for providing subsidised entry into the quartet contest for the members of the YWIH Chorus.

Finally, thank you to all of the wonderful members of Region 35 out there for supporting the YWIH programme in New Zealand - it's your support and generosity that allows us to make events like this happen and enables us to keep introducing more young women to this wonderful art form.

**JESSIE LEOV**  
**YWIH COORDINATOR**



# NZ CHAPTER CONTACTS



## BELLA A CAPPELLA CHORUS

Director: Patti Cooke  
TC: Gaye Dawn  
g.dawn@slingshot.co.nz  
Meets: Thursdays 6.30pm  
‘Venue info pending’  
Kerikeri. Ph 09 405 8773 / 021 0233 8126  
www.bellaacappellanz.co.nz

## CAPITAL HARMONY CHORUS

Co-Directors: Joanne Oliver & Mary Sagato  
TC: Robin Ransom  
macran90@gmail.com  
Meets: Mondays 7.30pm  
Churton Park School Hall, Wellington  
Ph 04 972 0041  
www.capitalharmony.org.nz

## CHRISTCHURCH CITY CHORUS

Director: Virginia Humphrey-Taylor  
TC: Jeannette McGrath  
jpmcgrath@xtra.co.nz  
Meets: Wednesdays 7.30pm  
Harmony Church, 220 Antigua Street  
Christchurch, Canterbury  
Ph 021 976 572  
www.ccchorus.co.nz

## DUNEDIN HARMONY CHORUS

Director: Robyn Abernethy  
TC: Tracy Pettinger  
tracy@pettinger.nz  
Meets: Tuesdays 7.30pm  
Andersons Bay Bowling Club  
Bayfield Road, Dunedin  
Ph 027 348 7585  
www.dunedinharmony.webs.com

## FAULTLINE CHORUS

Director: Carolyn Currington  
TC: Jacqui Binnie  
jiffyscout288@gmail.com  
Meets: Wednesdays 7.30pm  
Salvation Army Crossroads  
Cnr High/Cuba Sts, Petone, Wellington  
Ph 021 552 583  
www.faultline.org.nz

## FOVEAUX HARMONY CHORUS

Director: Sarah Rae  
TC: Lorraine Crawford  
fhcmanage2012@gmail.com  
Meets: Thursdays 7.00pm  
U.F.S Hall 76 Tay St, Invercargill  
Ph 027 347 2320  
www.foveauxharmony.co.nz

## GREATER AUCKLAND CHORUS

Director: Jocosa Bruce  
TC: Jennifer Caldwell  
jcaldwell@xtra.co.nz  
College of Education - Music Building  
Gate 3, Building B, 74 Epsom Avenue  
Epsom, Auckland  
Ph 021 624 162  
www.greateraucklandchorus.com

## MANAWATU OVERTONES CHORUS

Co-Directors: Sylvia Fountain & Liz Watts  
TC: Faye Roberts  
robam@inspire.net.nz  
Meets: Tuesdays 7pm  
Milson Combined Church  
Cnr Milson Line/Purdie St  
Palmerston North  
Ph 06 354 1258 / 021 263 4809  
www.facebook.com/ManawatuOvertones

## NELSON BAYS HARMONY CHORUS

Director: Kathy Jamieson  
TC: Jenny Edwards  
nbhctenor@gmail.com  
Meets: Thursdays 7pm  
Club Waimea, Lower Queen St  
Richmond. Ph 03 547 4354  
www.nelsonharmony.org.nz

## SOUNDS OF HAWKES BAY CHORUS

Director: Lana Morgan  
TC: Pippa Searle  
pippasearle@yahoo.co.nz  
Meets: Mondays 7.15pm  
Clive School, 57 School Road, Clive  
Ph 06 843 3348 / 021 211 1708  
www.soundsofhawkesbaychorus.co.nz

## SOUTHCITY SOUNDZ CHORUS

Co-Directors: Sheryl Willis & Cheryl Weijermars  
TC: Fleur de Farias  
defarias@xtra.co.nz  
Meets: Mondays 7.15pm  
St John the Evangelist School Otara Rd,  
Otara. Ph 09 238 5642 / 027 228 6053  
www.facebook.com/SouthCity-Soundz

## TARANAKI HARMONY CHORUS

Director: Gill Holmes  
TC: Carol Jager  
tunnehills@gmail.com  
Meets: Wednesdays 7pm  
St Andrews Church  
Liardet Street, New Plymouth  
Ph 06 762 2723  
www.taranakiharmony.co.nz

## WAIKATO RIVERTONES CHORUS

Director: Kate Sinclair  
TC: Julie Earl  
rogerjulie.earl@gmail.com  
Meets: Mondays 7pm  
Marian School Hall  
Clyde Street, Hamilton  
Ph 027 500 5564  
www.waikatorivertones.com

## WELLINGTON CITY CHORUS

Co-Directors: David Brooks  
& Henrietta Hunkin-Tagaloa  
TC: Claire Takacs  
claireandacky@gmail.com  
Meets: Mondays 7pm, Wellington Bridge  
Club, 17 Tinakori Road, Wellington  
Ph 04 934 0666 / 021 401 865  
www.wellingtoncitychorus.org

## WHANGAREI HARMONY CHORUS

Director: Kim Cairns  
TC: Philippa Woodward  
preswhc@gmail.com  
Meets: Mondays 6.30pm  
Brass Band Hall, Dyer Street, Whangarei  
Ph 09 437 1159 / 021 117 4082  
www.whangareiharmony.org.nz

## REGION 35 SWEET ADELINES NEW ZEALAND

is part of Sweet Adelines International which is a highly respected world-wide organisation of women singers, committed to advancing the musical art form of four part a cappella, barbershop harmony through education and performance. This educational organisation is one of the largest singing organisations for women in the world.

Hundreds of women of all ages are having the time of their lives. Our choruses and quartets give women a voice - singing, learning, fun, fitness, socialising and growth in confidence.

[www.sweetadelines.co.nz](http://www.sweetadelines.co.nz)

[www.facebook.com/SweetAdelinesNZ](https://www.facebook.com/SweetAdelinesNZ)

[www.sweetadelines.com](http://www.sweetadelines.com)

Twitter: @sweetadsnz

Instagram: @sweetadsnz | #sweetadsnz | #sweetadelinesnz

## ADVERTISE IN THE ADDALINE MAGAZINE!

Advertising is available free of charge  
to Region 35 Quartets and Choruses

### BUSINESS ADVERTISING:

\$100 Full page

\$75 Half page horizontal / vertical

\$50 quarter page horizontal / vertical  
(prices include gst)

Please contact Sandy Gunn if you would like to  
place an advert: [gunnfam@xtra.co.nz](mailto:gunnfam@xtra.co.nz)





*Region 35 are thrilled to have **FOUR** representatives in St Louis! We send best wishes to **Faultline Chorus, Wellington City Chorus, Bella A Cappella Chorus & Fire and Ice** as you shine bright on stage in St Louis this October!*



**REAL WOMEN - REAL HARMONY - REAL FUN**